

Pea packet design challenge

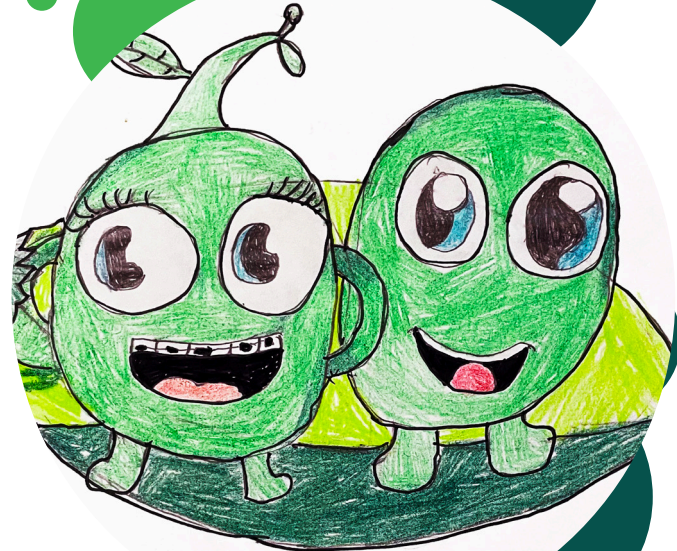
Your challenge is to design a pea packet. Before you begin, look at some seed packets online to give you some ideas of what other seed packets look like.

There are 2 sheets to this challenge:

- Sheet 1 contains all the information that needs to go on the packet.
- Sheet 2 contains the packet outline for you to arrange the information onto.
- You will need to cut out the statements (or write them) and organise them on the seed packet template.
- Please add all your ideas onto this template. The seed template is quite small so you will need to think carefully about your design.
- Make sure your design makes other people want to get the seeds and grow them.

What you need to include on your seed packet

On sheet 1 you will find all the information you require on your seed packet. You will need to decide what order this information goes in and stick these statements down on sheet 2. You can add your own artwork as well if you want to!



You can post your entries to FAO Sara Smith, RHET, Royal Highland Centre, Ingliston, EH28 8NB or upload your entries online www.rhet.org.uk/pea-packet-design-challenge

Pea packet design challenge

Sheet 1



JAN FEB MAR APR MAY JUN JUL AUG SEP OCT NOV DEC

1



2

Sowing Information

3

• Plant (sow) the pea seeds outdoors from March to June, once the soil has warmed.

4

• Choose a location with well-drained soil in full sun.

5

• Sow the pea seeds 4cm deep.

6

• Germination can take up to 10 days.

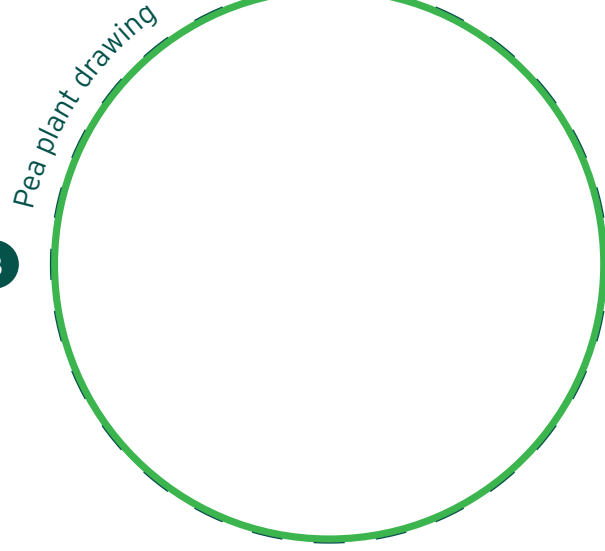
**Large Blue
Spring Peas**

13

7



8



9

• Water well during dry weather to help with flowering and pea pod forming.

10

• You can plant your seeds in pots or directly in the ground.

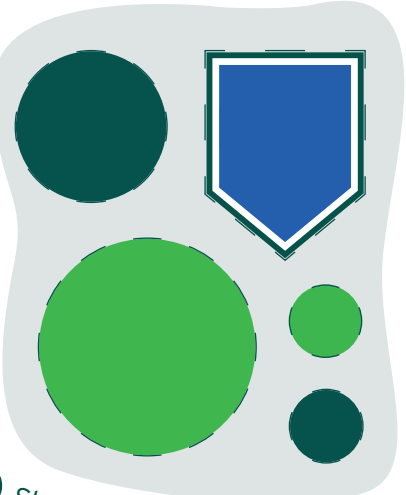
11

• Store seeds in a cool dry place

12

For further information and ideas linked to learning about peas please visit <https://www.rhet.org.uk/teachers/give-peas-a-chance-in-schools/>

14



Shapes to use in your design!

FRONT



BACK



Pupil name

School

Teacher name